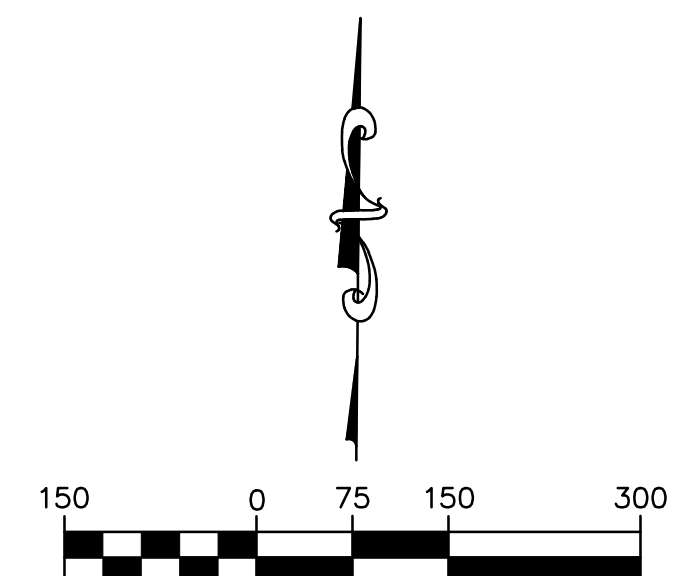
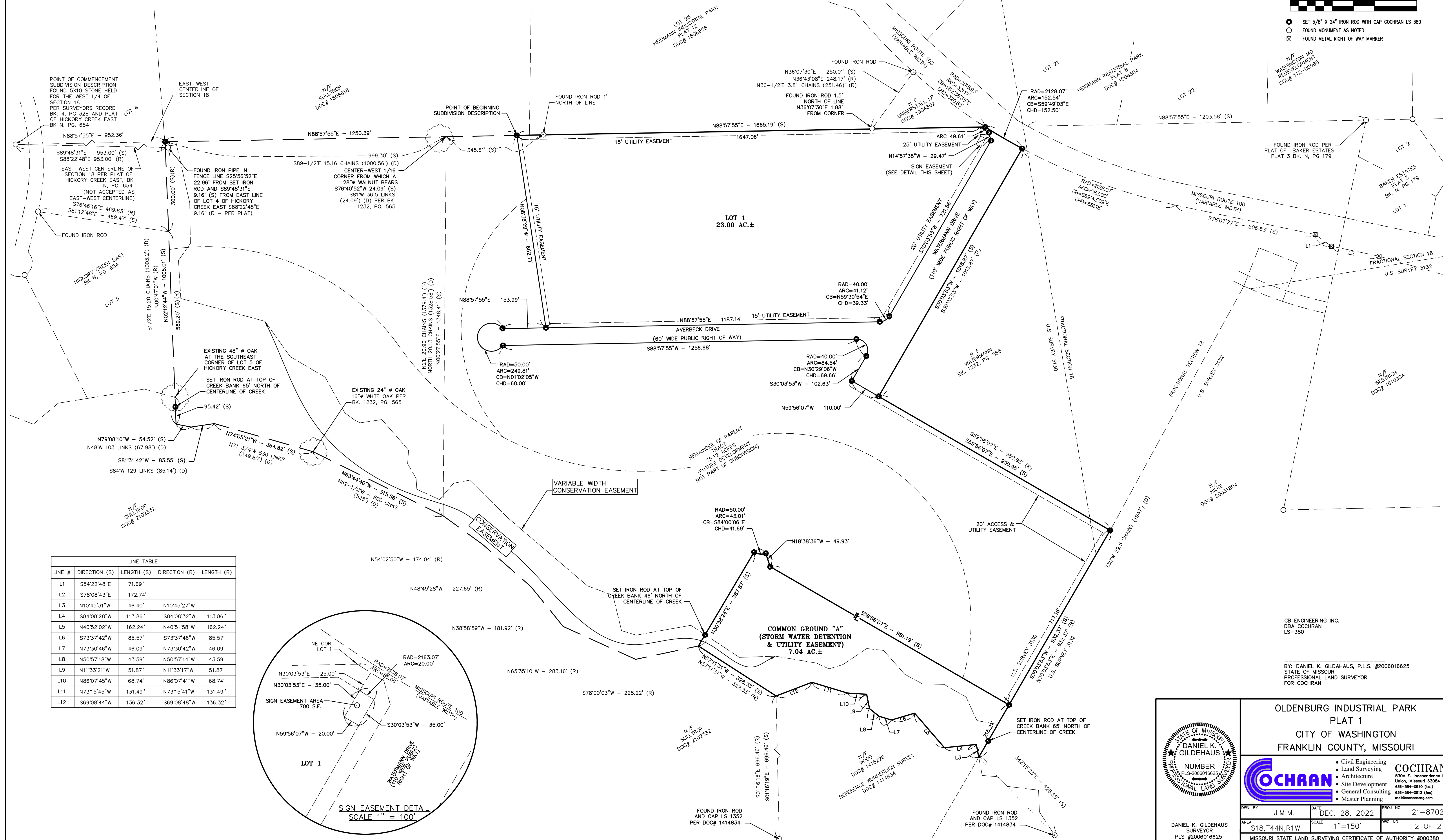


OLDENBURG INDUSTRIAL PARK PLAT 1

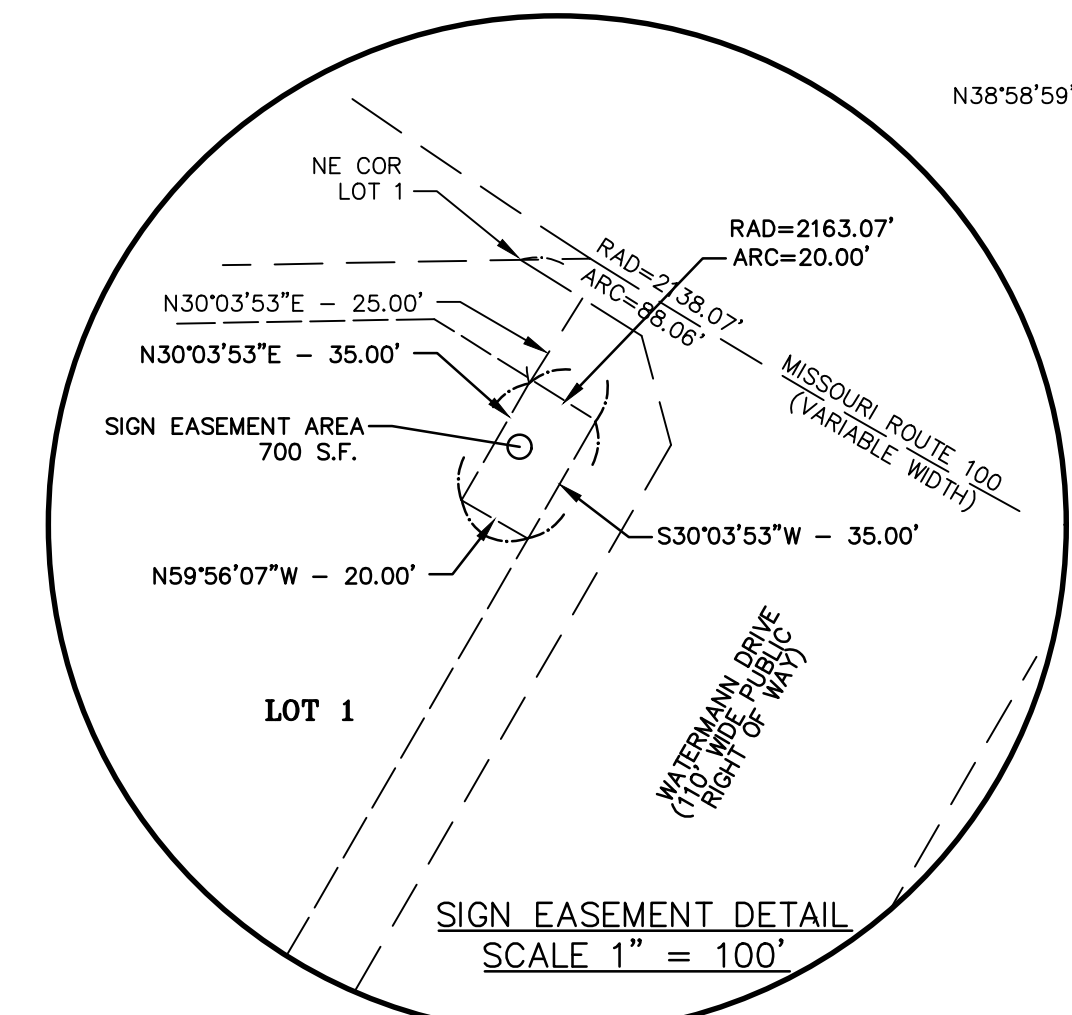
A TRACT OF LAND BEING PART OF THE SOUTH HALF OF SECTION 18,
TOWNSHIP 44 NORTH, RANGE 1 WEST OF THE 5TH PRINCIPAL MERIDIAN,
CITY OF WASHINGTON FRANKLIN COUNTY, MISSOURI



- SET 5/8" X 24" IRON ROD WITH CAP COCHRAN LS 380
- FOUND MONUMENT AS NOTED
- ⊠ FOUND METAL RIGHT OF WAY MARKER



LINE #	DIRECTION (S)	LENGTH	DIRECTION (R)	LENGTH (R)
L1	S54°22'48"E	71.69'		
L2	S78°08'43"E	172.74'		
L3	N10°45'31"W	46.40'	N10°45'27"W	
L4	S84°08'28"W	113.86'	S84°08'32"W	113.86'
L5	N40°52'02"W	162.24'	N40°51'58"W	162.24'
L6	S73°37'42"W	85.57'	S73°37'46"W	85.57'
L7	N73°30'46"W	46.09'	N73°30'42"W	46.09'
L8	N50°57'18"W	43.59'	N50°57'14"W	43.59'
L9	N11°33'21"W	51.87'	N11°33'17"W	51.87'
L10	N86°07'45"W	68.74'	N86°07'41"W	68.74'
L11	N73°15'45"W	131.49'	N73°15'41"W	131.49'
L12	S69°08'44"W	136.32'	S69°08'48"W	136.32'



CB ENGINEERING INC.
DBA COCHRAN
LS-380

BY: DANIEL K. GILDEHAUS, P.L.S. #2006016625
STATE OF MISSOURI
PROFESSIONAL LAND SURVEYOR
FOR COCHRAN

**OLDENBURG INDUSTRIAL PARK
PLAT 1
CITY OF WASHINGTON
FRANKLIN COUNTY, MISSOURI**

COCHRAN
Civil Engineering
Land Surveying
Architecture
Site Development
General Consulting
Master Planning

530A E. Independence Dr.
Union, Missouri 63084
636-564-0940 (fax)
636-564-0912 (fax)
mol@cochrane.com

DATE	DEC. 28, 2022	PROJ. NO.	21-8702
SCALE	1"=150'	DWG. NO.	2 OF 2
MISSOURI STATE LAND SURVEYING CERTIFICATE OF AUTHORITY #000380			