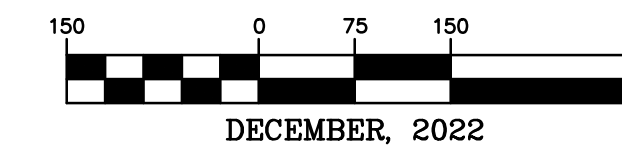
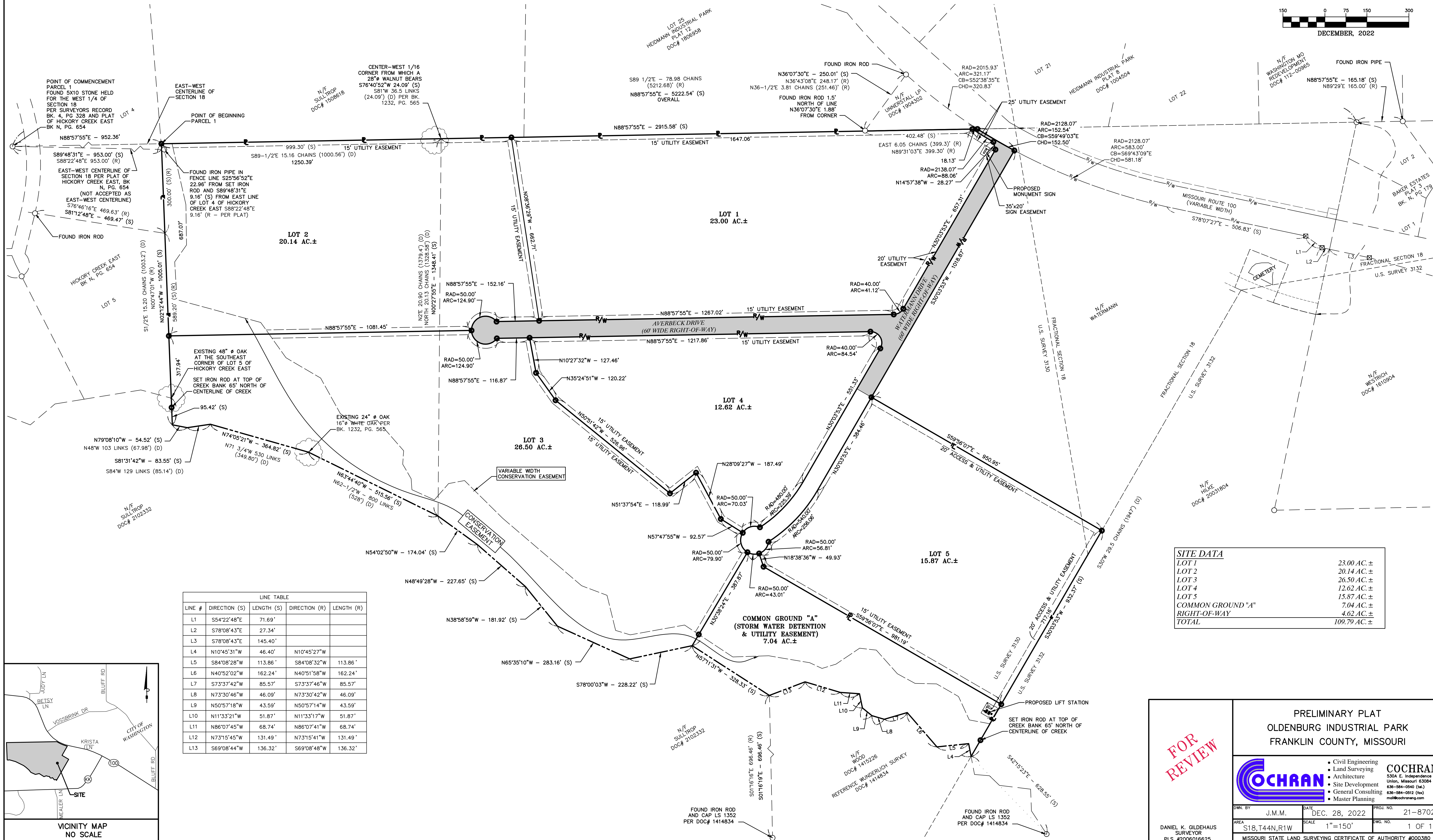


# PRELIMINARY PLAT OLDENBURG INDUSTRIAL PARK

A TRACT OF LAND BEING PART OF THE SOUTH HALF OF SECTION 18,  
TOWNSHIP 44 NORTH, RANGE 1 WEST OF THE 5TH PRINCIPAL MERIDIAN,  
FRANKLIN COUNTY, MISSOURI

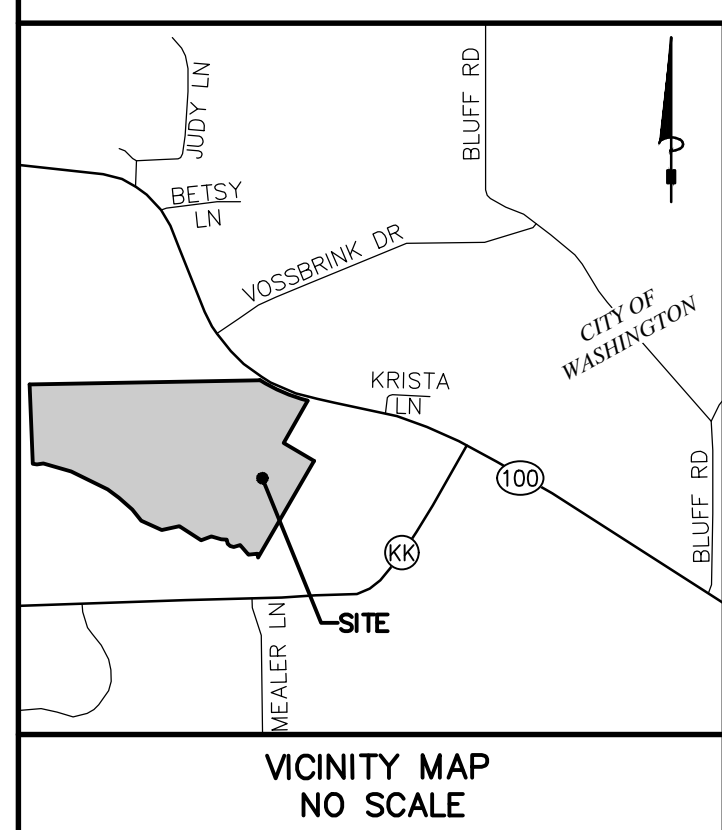


DECEMBER, 2022



LINE TABLE					
LINE #	DIRECTION (S)	LENGTH (S)	DIRECTION (R)	LENGTH (R)	
L1	S54°22'48"E	71.69'			
L2	S78°08'43"E	27.34'			
L3	S78°08'43"E	145.40'			
L4	N10°45'31"W	46.40'	N10°45'27"W		
L5	S84°08'28"W	113.86'	S84°08'32"W	113.86'	
L6	N40°52'02"W	162.24'	N40°51'58"W	162.24'	
L7	S73°37'42"W	85.57'	S73°37'46"W	85.57'	
L8	N73°30'46"W	46.09'	N73°30'42"W	46.09'	
L9	N50°57'18"W	43.59'	N50°57'14"W	43.59'	
L10	N11°33'21"W	51.87'	N11°33'17"W	51.87'	
L11	N86°07'45"W	68.74'	N86°07'41"W	68.74'	
L12	N73°15'45"W	131.49'	N73°15'41"W	131.49'	
L13	S69°08'44"W	136.32'	S69°08'48"W	136.32'	

SITE DATA	
LOT 1	23.00 AC. ±
LOT 2	20.14 AC. ±
LOT 3	26.50 AC. ±
LOT 4	12.62 AC. ±
LOT 5	15.87 AC. ±
COMMON GROUND "A"	7.04 AC. ±
RIGHT-OF-WAY	4.62 AC. ±
<b>TOTAL</b>	<b>109.79 AC. ±</b>



FOR REVIEW

PRELIMINARY PLAT  
OLDENBURG INDUSTRIAL PARK  
FRANKLIN COUNTY, MISSOURI

**COCHRAN**  
530A E. Independence Dr.  
Union, Missouri 63084  
636-584-0240 (fax)  
636-584-0212 (fax)  
mol@cochransurvey.com

DATE	DEC. 28, 2022	PROJ. NO.	21-8702
SCALE	1"=150'	DWG. NO.	1 OF 1
MISSOURI STATE LAND SURVEYING CERTIFICATE OF AUTHORITY #000380			

DANIEL K. CALDEHAUS SURVEYOR PLS #2006016625